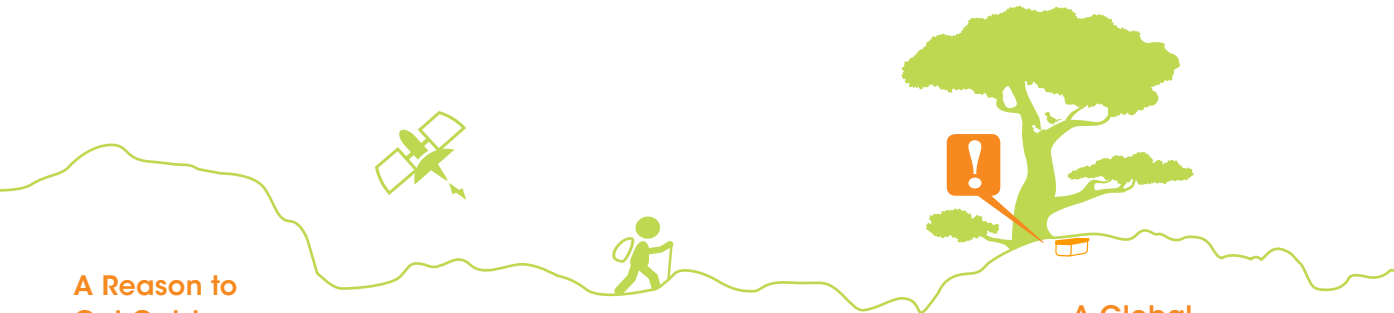


**GEOCACHING** is a high-tech treasure hunting game played throughout the world by adventure seekers equipped with GPS devices. The basic idea is to locate hidden containers, called geocaches, outdoors and then share your experiences online. Anyone can use coordinates found on [Geocaching.com](http://Geocaching.com) to locate geocaches.



### A Reason to Get Outdoors

Geocaching combines technology with outdoor adventure and is a great way to explore locations near and far. Pair geocaching with camping, hiking, biking, boating or any number of activities for an even more enjoyable experience.

### The "Treasure"

In its simplest form, a geocache contains a logbook or logsheet for you to sign. Caches may also contain items for trade, but the journey in discovering a geocache is often the greatest reward.

### Location, Location, Location

There are geocaches on every continent, from Antarctica to North America. They may be at your local park, the end of a long hike, underwater, or on the side of a city street.

### A Global Community

People from all age groups can participate in geocaching, including individuals, families with children, students, adults and retirees. Geocaching is a great way to bring friends and family together while having fun outdoors.

## GEOCACHING BASICS

### Before You Go

- Learn how to operate your GPS device and bring extra batteries.
- Select a geocache with terrain and difficulty ratings that will meet your goals. A (1/1) is easiest, a (5/5) the most difficult.
- Read the geocache description and don't forget the hints. It is also a good idea to bring a map.
- Remember that a geocache can take longer to find depending on environmental obstacles.
- Pack any needed supplies such as water, food and extra clothing.
- Invite friends and family with you; sharing the experience can be very rewarding. Pets are usually welcome too!
- Let someone else know where you are going.

### On Your Way

- Mark your car or a trailhead as a waypoint to ensure your safe return.
- Rely on your eyes rather than your GPS device within 50 feet of the geocache location.
- Remember, geocaches are hidden in plain sight and never buried, but they are often very cleverly camouflaged.
- Be mindful of the environment; practice Cache In Trash Out.

### After the Find

- Sign the cache logbook.
- Leave the cache as you found it (hidden, of course).
- Share your geocaching stories and photos online at [Geocaching.com](http://Geocaching.com).

## GEOCACHING IN 8 EASY STEPS

- 1 Go to [www.geocaching.com](http://www.geocaching.com) and register for a free account.
- 2 Click "Hide & Seek a Cache."
- 3 Enter a postal code or address and click "Search."
- 4 Choose any geocache from the list and click on its name.
- 5 Enter the coordinates of the geocache into your GPS device.
- 6 Use your GPS device to help you find the hidden geocache.
- 7 Sign the logbook and return the geocache to its original location.
- 8 Share your geocaching stories and photos online.

### Rules of Geocaching

- If you take something from the cache, leave something of equal or greater value.
- Write about your find in the cache logbook.
- Log your experience at [www.geocaching.com](http://www.geocaching.com).

### Basic Guidelines

- Geocaches should never be buried or placed in a location that might cause unnecessary concern.
- Don't place items such as food, explosives, knives, drugs or alcohol in a geocache.
- Geocache contents should be family friendly.
- Respect local laws and obey posted signs.





## TYPES OF GEOCACHES



### Traditional

The original geocache type consisting of, at minimum, a container and a logbook. Coordinates listed on a traditional cache page give the cache's exact location.



### Multi-Cache

A multi-cache involves two or more locations. Hints found at the initial location(s) lead to the final geocache, which is a physical container.



### Mystery or Puzzle Caches

Mystery or puzzle caches can involve complicated puzzles you will first need to solve to determine the coordinates of the cache.



### Event Cache

A geocaching event organized by local geocachers or geocaching organizations in the interest of discussing geocaching. Coordinates on the cache page indicate event location.

**GEOCACHING** is a high-tech treasure hunting game played throughout the world by adventure seekers equipped with GPS devices.

### Want More Information?

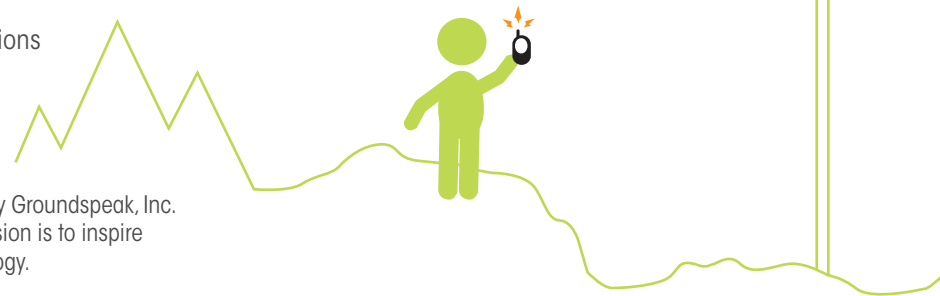
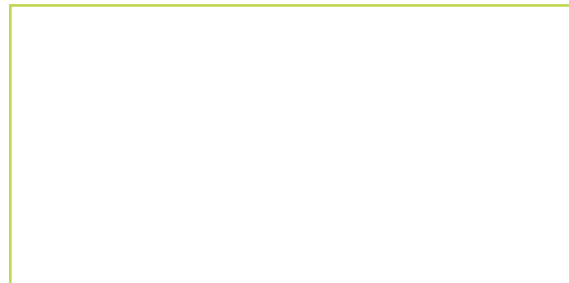
Visit [www.geocaching.com](http://www.geocaching.com) to:

- Search for geocaches in your area
- Buy and use a GPS device
- Learn about the history of geocaching
- Find geocachers and events
- Participate in the online forums
- Locate resources and recommendations



Geocaching.com is owned and operated by Groundspeak, Inc. of Seattle, Washington. Groundspeak's mission is to inspire outdoor play using location-based technology.

Compliments of:



## CACHE IN TRASH OUT



Cache In Trash Out is a worldwide environmental clean-up effort supported by the geocaching community. Since 2002, geocachers have been dedicated to cleaning up parks and other cache-friendly places around the world.

Check the online event calendar to participate in organized clean-ups in your area.

For more information visit [www.geocaching.com/cito](http://www.geocaching.com/cito)

**GROUNDSPEAK PRESENTS**

# A GUIDE TO GEOCACHING